

Woman's Day® Specials

Remodeling & Makeovers™

228

PRODUCTS & SOURCES
FOR EVERY ROOM

amazing

**BEFORE
& AFTERS**

win
one of over 1,000
prizes including
\$25,000 in cash*
See p. 94

*boost your
home's value*

Easy Upgrades for Kitchens & Baths
Slash Your Energy Bill
Do-It-Yourself Weekend Projects

Woman's Day
Remodeling & Makeovers
Volume XXI, Number 1
U.S. \$4.99
Display until August 8, 2011
womansday.com/specials
*No purchase necessary



WOMAN'S DAY SPECIAL INTEREST PUBLICATIONS

REMODELING & MAKEOVERS

VOL. XXI, NO. 1

WOMAN'S DAY SPECIAL INTEREST PUBLICATIONS

real redos

ALL ABOUT THE HOUSE
location
ORINDA, CA
built
1978
house style
TWO-LEVEL RANCH
3,400 SQ. FT.
5 BEDROOMS, 3 BATHS



LIGHTEN UP Dark and outdated, the former kitchen felt closed-in.

room with a view

A once-dreary California kitchen opens up to the great outdoors

WRITTEN BY NANCY A. RUHLING
PHOTOGRAPHS BY JAMES CARRIERE

With its drab cabinets and tired layout, the 418-square-foot kitchen where physicians Karen and Robert Eppley spent a good deal of their time off was ailing, to say the least. The couple, 51 and 54, called on designer Julie Williams, CKD, CBD, of Novato, California, who prescribed a change in the layout to better take advantage of the view—the home's lush backyard—and separating the space into five key areas: a food prep station, a desk, a breakfast nook, a wine and coffee bar, and a central island where the Eppleys' teenagers—Sarah, 19, Emma, 16, and Robert, 14—can do homework. In the end, this sunlight-drenched space was just what the doctors ordered.



LET IN THE LIGHT A new glass door by Simpson Door Company (simpsondoor.com) with Baldwin hardware (baldwinhardware.com) opens up the room.



GO GR
with th
you ca
dark p
(Benja
Gray S
\$40.99
benjam



PAIR SHAPES An Ilex drum shade (ilexlight.com) mirrors the CB2 Odyssey table (\$199; cb2.com) below.

GO GRAY In a room with this much light, you can go with a dark paint color (Benjamin Moore's Gray Shower, from \$40.99 per gallon; benjaminmoore.com).



STREAMLINE CLUTTER In the desk area, glass-front cabinets couldn't conceal the mess inside.




CHOOSE ONE COLOR A built-in by Columbia Cabinets (columbiacabinets.com) in white has pocket doors to hide clutter. Supplies in the same shade help the nook look organized. The desktop is Corian in color Sonora (dupont.com).



FIND AN OUTLET

A structural column holds electrical outlets for plugging in appliances pulled from their home in the island's cabinets.



SET THE SCENE

Washing dishes at the Oliveri sink (oliverisinks.com) fitted with a KWC faucet (kwcamerica.com) is a pleasure thanks to the picture window.

MIX IT UP Mocha-colored CaesarStone (caesarstone.com) graces the perimeter cabinets, while the island is covered with Natural Calcutta Oro honed marble from IRG (marblecompany.com).

BE SEATED Sleek LEM piston stools from Design Within Reach (\$865; dwr.com) let the family take in the scenery.

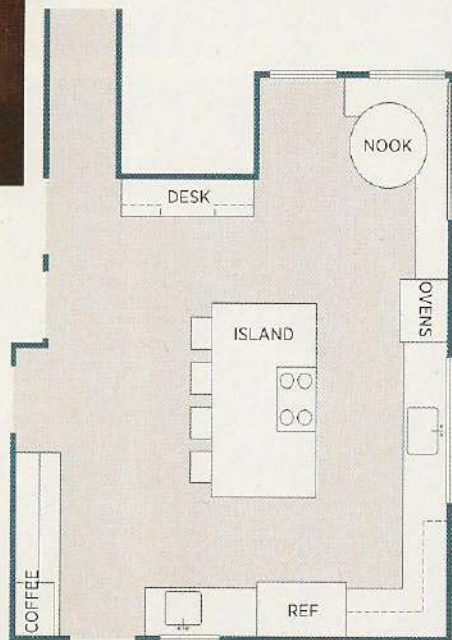


HANDLE IT On the panel-covered Liebherr refrigerator (liebherr.us) and cabinets: hand-cast bronze handles from Du Verre (duverre.com).



DON'T MESS WITH SUCCESS The designer liked the placement of the sink and fridge, *above*, so new models were simply swapped in.

To give the kitchen a clean, contemporary look that didn't totally depart from the home's traditional details, the designer used two types of cabinetry: maple painted matte white and wenge veneer.



KITCHEN AFTER The room flows around the center island, allowing the Eppleys to cook and entertain at the same time.

OFFER SELF-SERVICE

The built-in Miele coffeemaker (miele.com) lets guests help themselves to specialty drinks.



ADD TEXTURE The backsplash tile is a blend of coffee, blue-gray and white Gigi Groovy Stiiix glass mosaic in color Peace Man Peace from Alyse Edwards Tile & Stone (714-917-6720), a chocolate gloss $\frac{1}{2}$ "x6" liner by Ann Sacks (annsacks.com) and a 4"x16" tile in Lavagna matte by LEA Mood (ceramictiledesign.net).



HAVE A COLD ONE
A U-Line wine fridge (u-line.com) puts refreshments within reach—and leaves space in the full-size refrigerator for leftovers.

